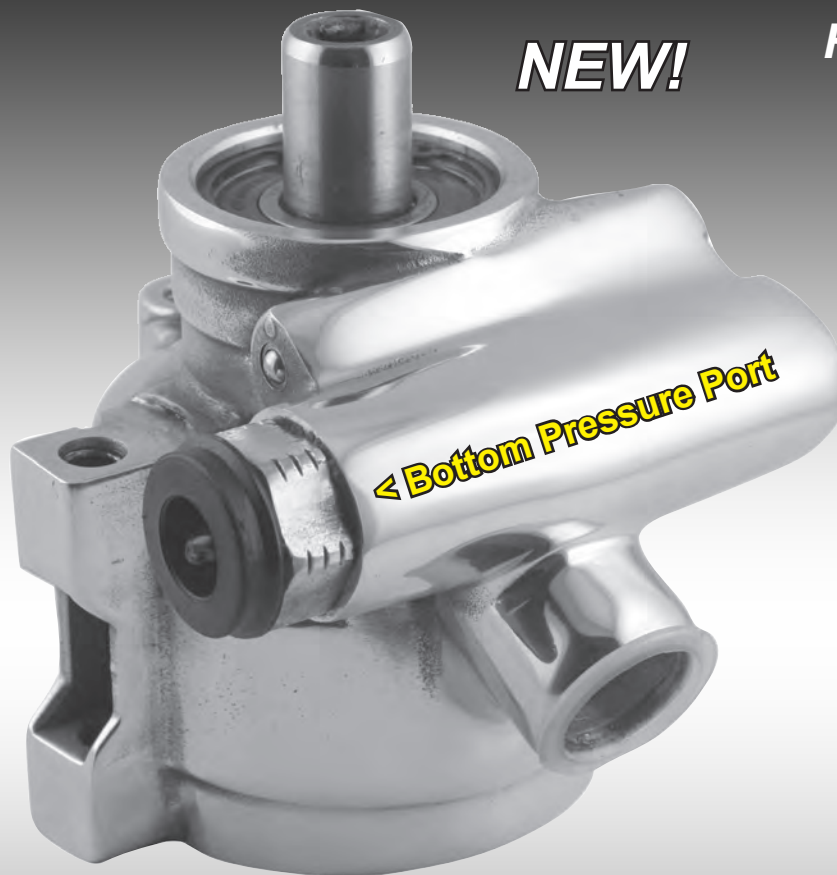


TYPE II POWER STEERING PUMPS

Perfect for street rods and custom vehicles with limited engine space



NEW!

Fits where others don't!

- Lightweight aluminum pump is compact in size and ideal for tight installations
- Available in polished aluminum, black painted or as cast finishes
- Bottom pressure port - for use with factory or remote reservoir tank depending upon part number
- 17mm (0.669") shaft requires a press-fit pulley and includes a pulley installation kit
- 1200 PSI rating, 3 GPM flow, 850 PSI rating upon request
- Perfect for street rods and custom vehicles with limited engine space
- 100% New - not reman

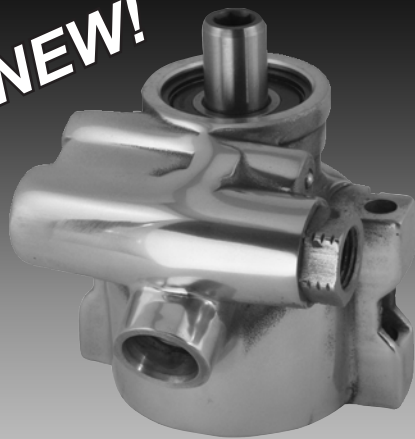
Finish	Ports - Fittings	Mounting	Part#
Polished	AN-6 & AN-10	3/8" through holes	6170ALP
Polished	GM pressure slip	M8 x 1.25 threaded holes	6170ALP-1
Polished	AN-6 & AN-10	M8 x 1.25 threaded holes	6170ALP-2
Polished	M16 & 5/8" OD return tube	3/8" through holes	6170ALP-3
Polished	M16 & 5/8" OD return tube	M8 x 1.25 threaded holes	6170ALP-4
Black painted	AN-6 & AN-10	3/8" through holes	6170ALB
Black painted	GM pressure slip	M8 x 1.25 threaded holes	6170ALB-1
Black painted	AN-6 & AN-10	M8 x 1.25 threaded holes	6170ALB-2
Black painted	M16 & 5/8" OD return tube	3/8" through holes	6170ALB-3
Black painted	M16 & 5/8" OD return tube	M8 x 1.25 threaded holes	6170ALB-4
As cast	AN-6 & AN-10	3/8" through holes	6170AL
As cast	GM pressure slip	M8 x 1.25 threaded holes	6170AL-1
As cast	AN-6 & AN-10	M8 x 1.25 threaded holes	6170AL-2
As cast	M16 & 5/8" OD return tube	3/8" through holes	6170AL-3
As cast	M16 & 5/8" OD return tube	M8 x 1.25 threaded holes	6170AL-4
As cast	M16 & 5/8" OD 90° return	M8 x 1.25 threaded holes	6170AL-5



9004 Madison Ave
 Cleveland, Ohio 44102
 800-331-6562 ©2013
www.tuffstuffperformance.com

TYPE II POWER STEERING PUMPS

NEW!



Top Pressure Port >

Finish	Housing	Ports - Fittings	Mounting	Part#
Chrome plated	Cast Iron	M16 & 5/8" OD return tube	M8 x 1.25 threaded holes	6175A
Chrome plated	Cast Iron	M16 & 5/8" OD return tube	3/8" through holes	6175A-2
Chrome plated	Cast iron	M16 & 5/8" ID port	M8 x 1.25 threaded holes *	6173A
Polished	Aluminum	GM LS1 stock replacement	1998-02 Camaro & Firebird *	6175ALP-6
Polished	Aluminum	GM pressure slip	M8 x 1.25 threaded holes	6175ALP-1
Polished	Aluminum	GM pressure slip	3/8" through holes	6175ALP-7
Polished	Aluminum	AN-6 & AN-10	3/8" through holes	6175ALP
Polished	Aluminum	AN-6 & AN-10	M8 x 1.25 threaded holes	6175ALP-2
Polished	Aluminum	M16 & 5/8" OD return tube	3/8" through holes	6175ALP-3
Polished	Aluminum	M16 & 5/8" OD return tube	M8 x 1.25 threaded holes	6175ALP-4
Black painted	Cast iron	M16 & 5/8" OD return tube	M8 x 1.25 threaded holes	6175B
Black painted	Cast iron	M16 & 5/8" ID port	M8 x 1.25 threaded holes *	6173B
Black painted	Aluminum	GM LS1 stock replacement	1998-02 Camaro & Firebird *	6175ALB-6
Black painted	Aluminum	GM pressure slip	M8 x 1.25 threaded holes	6175ALB-1
Black painted	Aluminum	GM pressure slip	3/8" through holes	6175ALB-7
Black painted	Aluminum	AN-6 & AN-10	3/8" through holes	6175ALB
Black painted	Aluminum	AN-6 & AN-10	M8 x 1.25 threaded holes	6175ALB-2
Black painted	Aluminum	M16 & 5/8" OD return tube	3/8" through holes	6175ALB-3
Black painted	Aluminum	M16 & 5/8" OD return tube	M8 x 1.25 threaded holes	6175ALB-4
Blue PC	Aluminum	AN-6 & AN-10	3/8" through holes	6175ALBLUE
Orange PC	Aluminum	AN-6 & AN-10	3/8" through holes	6175ALORANGE
Red PC	Aluminum	AN-6 & AN-10	3/8" through holes	6175ALRED
Yellow PC	Aluminum	AN-6 & AN-10	3/8" through holes	6175ALYELLOW
As cast	Aluminum	GM LS1 stock replacement	1998-02 Camaro & Firebird *	6175AL-6
As cast	Aluminum	GM pressure slip	M8 x 1.25 threaded holes	6175AL-1
As cast	Aluminum	GM pressure slip	3/8" through holes	6175AL-7
As cast	Aluminum	AN-6 & AN-10	3/8" through holes	6175AL
As cast	Aluminum	AN-6 & AN-10	M8 x 1.25 threaded holes	6175AL-2
As cast	Aluminum	M16 & 5/8" OD return tube	3/8" through holes	6175AL-3
As cast	Aluminum	M16 & 5/8" OD return tube	M8 x 1.25 threaded holes	6175AL-4
As cast	Aluminum	M16 & 5/8" OD 90° return	M8 x 1.25 threaded holes	6175AL-5
As cast	Cast iron	M16 & 5/8" OD return tube	M8 x 1.25 threaded holes	6175C

Compact size fits cramped engine bays

- Available in chrome plated, polished aluminum, various colors and as cast finishes
- Top pressure port - for use with factory or remote reservoir tank depending upon part number
- 1200 PSI rating, 3 GPM, 850 PSI rating upon request, top facing pressure port
- Pumps have a 17mm (0.669") shaft - except those noted* which have a 19mm (0.748") shaft
- Press fit pulley installation kit is included - requires a press on pulley, not included
- 100% New - not reman



www.tuffstuffperformance.com