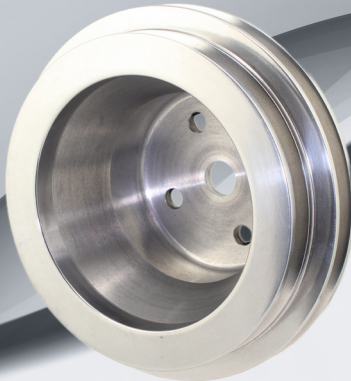




ALUMINUM WATER PUMP PULLEYS



9884C



9888A



9889F

- Precision cast aluminum pulleys are strong and lightweight
- Applications include small and big block Chevrolet engines with a single or double V-belt
- Finishes include chrome plated, polished, satin, black powder coated and Factory Cast Plus+
- Triple chrome plated in the USA - a Tuff Stuff signature
- Perfect color match for seamless engine aesthetics

Note: It may be necessary to shim pulley to achieve perfect belt alignment. Use Tuff Stuff 7620 water pump shims. Alternator, water pump, air conditioning & power steering pump brackets are also available.



9887C



9886C



9885A



9890BLK

CHEVROLET	PUMP	V-GROOVE	CHROME	BLACK	SATIN	CAST PLUS+	POLISHED
Small Block	Short	1	9885A	9885BLK	9885C	9885F	9885P
Small Block	Short	2	9887A	9887BLK	9887C	9887F	9887P
Small Block	Long	1	9886A	9886BLK	9886C	9886F	9886P
Small Block	Long	2	9890A	9890BLK	9890C	9890F	9890P
Big Block	Short	1	9889A	9889BLK	9889C	9889F	9889P
Big Block	Short	2	9888A	9888BLK	9888C	9888F	9888P
Big Block	Long	2	9884A	9884BLK	9884C	9884F	9884P